



Deutscher Akademischer Austauschdienst
German Academic Exchange Service



Table of Contents

Master's degree	2
Environmental and Resource Management (MSc) • Brandenburg University of Technology Cottbus-Senftenberg • Cottbus	2

Master's degree



Environmental and Resource Management (MSc)

Brandenburg University of Technology Cottbus-Senftenberg • Cottbus



Overview

Degree	Master of Science
In cooperation with	Optional double degree programme with the Universidad Tecnológica de Pereira (UTP) in Colombia
Teaching language	<ul style="list-style-type: none">English
Languages	English, no further teaching languages
Full-time / part-time	<ul style="list-style-type: none">full-time
Programme duration	4 semesters
Beginning	Winter semester
Application deadline	<ul style="list-style-type: none">Applicants with a foreign qualification for admission to higher education: 15 May for the following winter semesterApplicants with a German qualification for admission to higher education: 31 August for the following winter semester
Tuition fees per semester in EUR	None
Combined Master's degree / PhD programme	No
Joint degree / double degree programme	Yes
Description/content	The Environmental and Resource Management (ERM) course of study offers an integrated approach to current environmental and resource management issues of high importance with the aim of providing a top level education for future employees of companies, public administrations in the field of the environment, environmental NGOs, international organisations, universities, and research organisations. Recognising that environmental questions can no longer be solved by a singular academic discipline, the programme offers a broad spectrum of courses ranging from

engineering and science to management and socioeconomics. The acquisition of soft skills (e.g. cultural competence) is thus valued as highly and as indispensably as that of technical and scientific knowledge. Due to the small seminar courses and the resulting good lecturer-student ratio, the quality of the study programme is extremely high and allows close interrelation between the students and their academic supervisors.

The Master's programme is a four-semester study programme. It builds consecutively on the ERM Bachelor's programme. The idea of the Master's programme is to provide students with a broad spectrum of environmental courses.

You can choose between three specialisations when applying: environmental sciences; environmental economics, planning, and law; and environmental engineering.

The environmental sciences area offers modules from the natural sciences and related fields with a specific environmental focus (e.g. general and applied ecology, environmental modelling, freshwater restoration ecology, environmental soil science and plant nutrition, geopedology, systems and process hydrology, introduction to climate variability and climate change projections, geoecology, microclimates, land surface - atmosphere interactions, and parasites).

The environmental economics, planning, and law specialisation offers students various planning and management courses (e.g. advanced studies of international environmental law, climate change and migration, strategic environmental assessment and environmental impact assessment, cost-benefit analysis in environmental evaluation, economics of land use and biodiversity conservation, methods of water resources management, and municipal solid waste management).

The third specialisation, environmental engineering, represents the technical part of the study programme (e.g. numerical simulation: free surface and groundwater modelling, modelling process in hydro engineering projects, information management in hydroinformatics systems, hydrology and hydraulics, renewable energy technologies for power supply, gas cleaning, natural resource investigation, safety and risk-analysis for process plants, and wastewater and sludge treatment).

For more information, please visit: <https://www.b-tu.de/en/environment-ms/>.

Course Details

Course organisation

In the study programme, there are two mandatory modules: the introduction module and the study project. The introduction module serves as a foundational course for all students entering the programme. It provides an overview of the study programme and familiarises students with the key concepts and methodologies that they will encounter throughout their studies.

The study project is a collaborative effort in which students demonstrate their scientific skills and enhance their abilities in project planning and team-oriented work. This module allows students to apply the knowledge they have acquired during their studies to a real-world project. It serves to enhance practical experience and develop problem-solving capabilities among the students.

When applying for the study programme, students are required to choose one of the three specialisations that aligns with their previous studies. Within their chosen specialisation, students must select a minimum of seven modules to complete. These modules delve deeper into the specific subject matter of the specialisations and provide students with advanced knowledge and expertise in their chosen fields.

In addition to the specialisation modules, students must also complete five modules from the area of compulsory elective modules. These modules can be selected from different specialisations, allowing students to explore other areas of interest or broaden their knowledge beyond their primary specialisation.

Furthermore, the study programme offers students the opportunity to spend a semester abroad. The curriculum is designed to incorporate this experience without extending the overall duration of the programme. Students can choose to study at one of the programme's partner universities, which allows them to gain international exposure and broaden their cultural and academic horizons.

Overall, the study programme aims to provide students with a comprehensive education that

combines theoretical knowledge with practical application, teamwork, and international experiences. The objective is to equip students with the necessary skills and knowledge for successful careers in their chosen fields.

A Diploma supplement will be issued	Yes
International elements	<ul style="list-style-type: none"> • International guest lecturers • International comparisons and thematic reference to the international context • Content-related regional focus
Integrated internships	No mandatory internships
Course-specific, integrated German language courses	No
Course-specific, integrated English language courses	No

Costs / Funding

Tuition fees per semester in EUR	None
Semester contribution	Apart from a few degree programmes, education offered at the BTU Cottbus-Senftenberg is without tuition fees. However, the university does charge a semester fee of around 135 EUR each semester. It covers the cost of the student services organisation ("Studentenwerk") and the student council (StuRa).

Costs of living

Studies abroad often have different types of expenses from the ones you know from your home country. You are responsible for covering your own living expenses. Accommodation and other essential living expenses will amount to around 600–900 EUR/month. Of course, this amount depends entirely on individual lifestyle. The following list gives you an idea of some fixed and variable costs that you should take into account for your stay in Germany. Monthly costs:

rent (including utilities): 200–400 EUR
public transportation: 49 EUR
groceries: approx. 170 EUR
health insurance, medical fees, medication: approx. 120 EUR
miscellaneous (clothing, study materials, other activities): 200–300 EUR
total: 700–950 EUR

The so-called "Deutschlandticket" allows you to travel using all local public means of transportation throughout Germany.

Funding opportunities within the university	Yes
Description of the above-mentioned funding opportunities within the university	Studying at BTU is mostly free of (study) fees. Because of this, there are only limited scholarship opportunities for international students. The International Relations Office is nonetheless pleased to be able to award a limited number of scholarships to international students already enrolled at BTU. You can find more information on BTU scholarship opportunities on our websites: https://www.b-tu.de/en/international/international-students/during-studies/scholarships

Requirements / Registration

Academic admission requirements

The basic admission requirement for the Master's programme is a degree (at least a Bachelor's degree) in which the course content demonstrates knowledge in several of the subject areas of natural sciences, environmental sciences, engineering sciences, or socioeconomics. The criterion for determining the subject requirement is a sufficient number of relevant completed modules from a qualifying academic degree for the selected field of study:

- environmental sciences (e.g. biology, ecology, soil science, climatology, agronomy, forestry, water resources management, hydrology, geology);
- environmental economics, planning, and law (e.g. environmental economics, environmental law, environmental planning, agricultural economics, environmental management, environmental policy, development economics, environmental governance);
- environmental engineering (e.g. environmental engineering, process and plant engineering, treatment engineering, recycling management, hydro engineering, water engineering, wastewater and irrigation engineering, biotechnologies);

as well as the module contents of the [ERM Bachelor's programme](#) (for all fields of study).

Language requirements

A certificate of proficiency in English must be provided. Accepted tests and minimum scores are:

- TOEFL (79 Internet-based)
- Cambridge Certificate (Advanced or Proficiency, min. grade B)
- IELTS (min. 6.0)

Applicants with a higher education entrance qualification from Australia, Canada, Ireland, New Zealand, Great Britain including Northern Ireland or the United States of America do not have to submit separate proof of English language skills. Applicants who have completed a secondary level degree in English in Germany or in one of the above mentioned countries are also exempted from presenting a formal English language certificate.

German language skills are not required for admission to this study programme.

Application deadline

- Applicants with a foreign qualification for admission to higher education: 15 May for the following winter semester
- Applicants with a German qualification for admission to higher education: 31 August for the following winter semester

Submit application to

International applicants must submit their applications via the uni-assist e.V. online application platform: www.uni-assist.de/en/

The application must be submitted entirely online. Thus, no hard copies are required.

Please find detailed information on the programme website at <https://www.b-tu.de/en/environment-ms>.

Services

Possibility of finding part-time employment

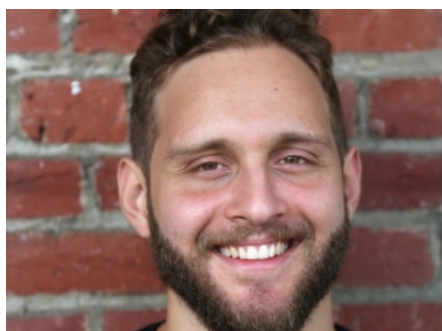
There are [job opportunities](#) both in town and on campus. Nevertheless, please do not come to Germany expecting to be able to finance your entire studies by working. The study load is high, and it is not always easy to find a part-time job. Students from non-European countries are allowed to work either 120 whole days or 240 half days annually. The 120-day rule is not affected by mandatory internships or student assistance jobs at university. Students from EU member

countries, the European Economic Area (EEA) and Switzerland can work without restrictions during their studies in Germany.

Accommodation

BTU Cottbus-Senftenberg is a university with three locations where numerous [student dormitories](#) are provided. Students can choose between different room types.

In Germany, it is also very common for students to live alone or with friends. If three or more people share an apartment together, this is called a "WG" in German ("Wohngemeinschaft", which means a shared flat).



©Jakob Levin

Jakob Levin
Master of Science

Studying ERM at the BTU provided the knowledge and connections my co-founders and I needed to contribute to the fight against climate change through our CQuest start-up. The ERM community is united and influential in this fight. From organisations such as the FAO, the World Economic Forum, and leading research centres, we are constantly stumbling upon (and inspired by) our fellow alumni.



Study and Research at a High Level in Germany: BTU Cottbus-Senftenberg

At BTU Cottbus-Senftenberg, we are passionately researching the questions of the future. Good teaching conditions are as important to us as conducting outstanding basic research and facilitating effective knowledge transfer into practical applications for industry and medium-sized businesses.

» more:
<https://www.youtube.com/watch?v=cQ7klU54eM4&t=2s>

Brandenburg University of Technology Cottbus-Senftenberg

The BTU welcomes you to start your academic journey!

© BTU

Located on three campuses and with about 60 [study programmes](#), BTU Cottbus-Senftenberg offers a broad spectrum of market-oriented programmes as well as traditional degree programmes.

From the natural sciences and engineering to economics, cultural studies, and even health sciences, BTU offers a wide range of courses. Our 13 study programmes taught exclusively in English are very popular among both German and international students from all over the world.

BTU is partnered with over 220 universities throughout the world, which provides students with a multitude of excellent opportunities to

spend part of their time [studying or conducting research abroad](#). Furthermore, in cooperation with our [international partner universities](#), BTU offers a wide range of [double-degree and joint-degree programmes](#).



University location

Cottbus is located in the north-east of Germany, between the country's capital, Berlin (100 km), and Dresden (120 km). With a population of approx. 100,000 inhabitants, Cottbus is the second largest city after Potsdam in the federal state of Brandenburg. The Polish border is only approx. 30 km away. The location of Cottbus offers a convenient starting point for trips into the picturesque region of Lower Lusatia. The landscape of Lower Lusatia is characterised by the Spreewald with its small canals and waterways as well as by the Slavonic minority called Sorbs or Wends. Their language, similar to Polish, is still used and spoken in Lower Lusatia. For this reason, many of the road signs and informational boards in Cottbus and the surrounding region are written in both Sorbian and German. Cottbus gained importance as a trade centre in the 12th century. Parts of the original city wall from the 14th century as well as the beautiful townhouses around the old market square are proof of the city's early splendour. Additionally, the city is characterised by buildings from the "Wilhelminian" times of rapid industrial growth in Germany, which occurred towards the end of the 19th century. The city that first rose to prominence with its cloth and linen weaving industry soon evolved into a growing centre of brown coal mining. Today, Cottbus is in the midst of a structural transformation. The BTU supports this development with its engagement in the [Lausitz Science Park](#) megaproject, which aims to build an appealing innovation landscape.

Senftenberg is the centre of the Lusatia Lake District. Former excavation and mining pits have been flooded in order to create the largest artificial lake system in Europe, with a total of 23 large lakes. The water sports area "Senftenberger See", with its water surface of 1,300 hectares, offers exceptional sailing and surfing opportunities, and it is suitable for all kinds of water sports. Senftenberg has thus become a tourist attraction within the region.

Contact

Brandenburg University of Technology Cottbus-Senftenberg
Bureau of International Studies (BIS)

Mohamed N. A. Elhag

Platz der Deutschen Einheit 1
03046 Cottbus

Tel. [+49 355693718](tel:+49355693718)

✉ environment-ms@b-tu.de

🌐 Course website: <https://www.b-tu.de/en/environment-ms/>

📘 <https://www.facebook.com/btucs/>

🐦 https://twitter.com/BTU_CS

🌐 <https://www.linkedin.com/school/btu-cottbus-senftenberg/>

📷 <https://www.instagram.com/btucs/>

📺 <https://www.youtube.com/c/btucottbussenftenberg>

Last update 05.05.2024 07:47:13

International Programmes in Germany - Database

www.daad.de/international-programmes
www.daad.de/sommerkurse

Editor

DAAD - Deutscher Akademischer Austauschdienst e.V.
German Academic Exchange Service
Section K23 – Information on Studying in Germany
Kennedyallee 50
D-53175 Bonn
www.daad.de

GATE-Germany

Consortium for International Higher Education Marketing
www.gate-germany.de

Disclaimer

The data used for this database was collected and analysed in good faith and with due diligence. The DAAD and the Content5 AG accept no liability for the correctness of the data contained in the "International Programmes in Germany" and "Language and Short Courses in Germany".

The publication is funded by the German Federal Ministry of Education and Research and by contributions of the participating German institutions of higher education.



Federal Ministry
of Education
and Research